



# KEOLIS

**Bruno Lapeyrie**

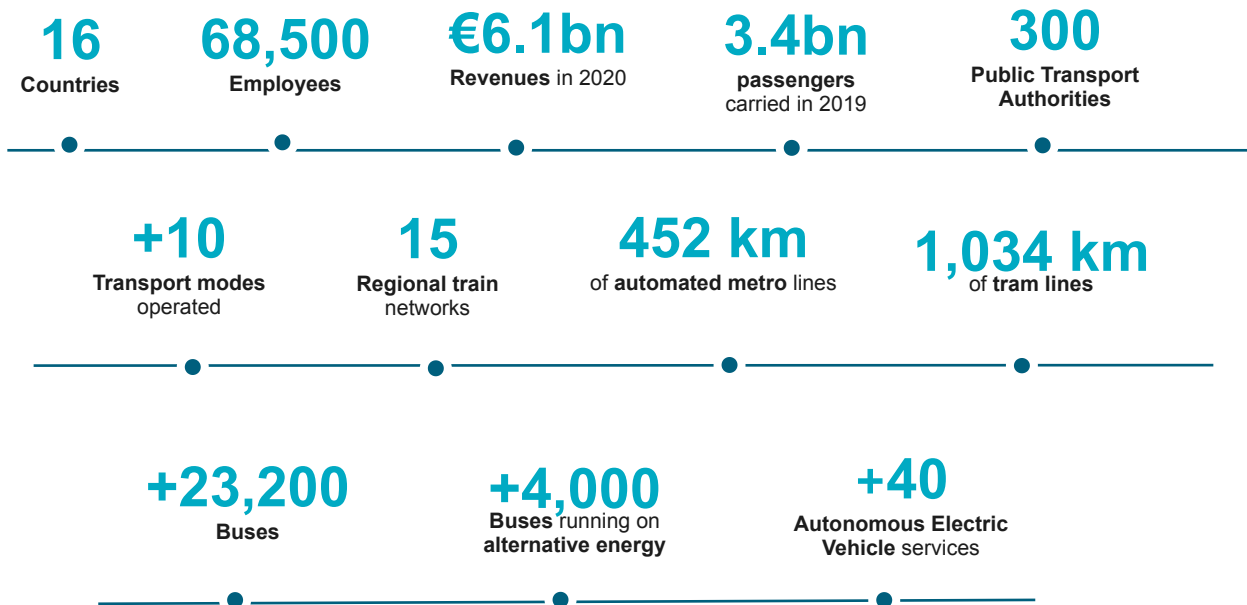
Director of the Centre of Excellence Energy Transition-  
Bus

**Keolis Group**



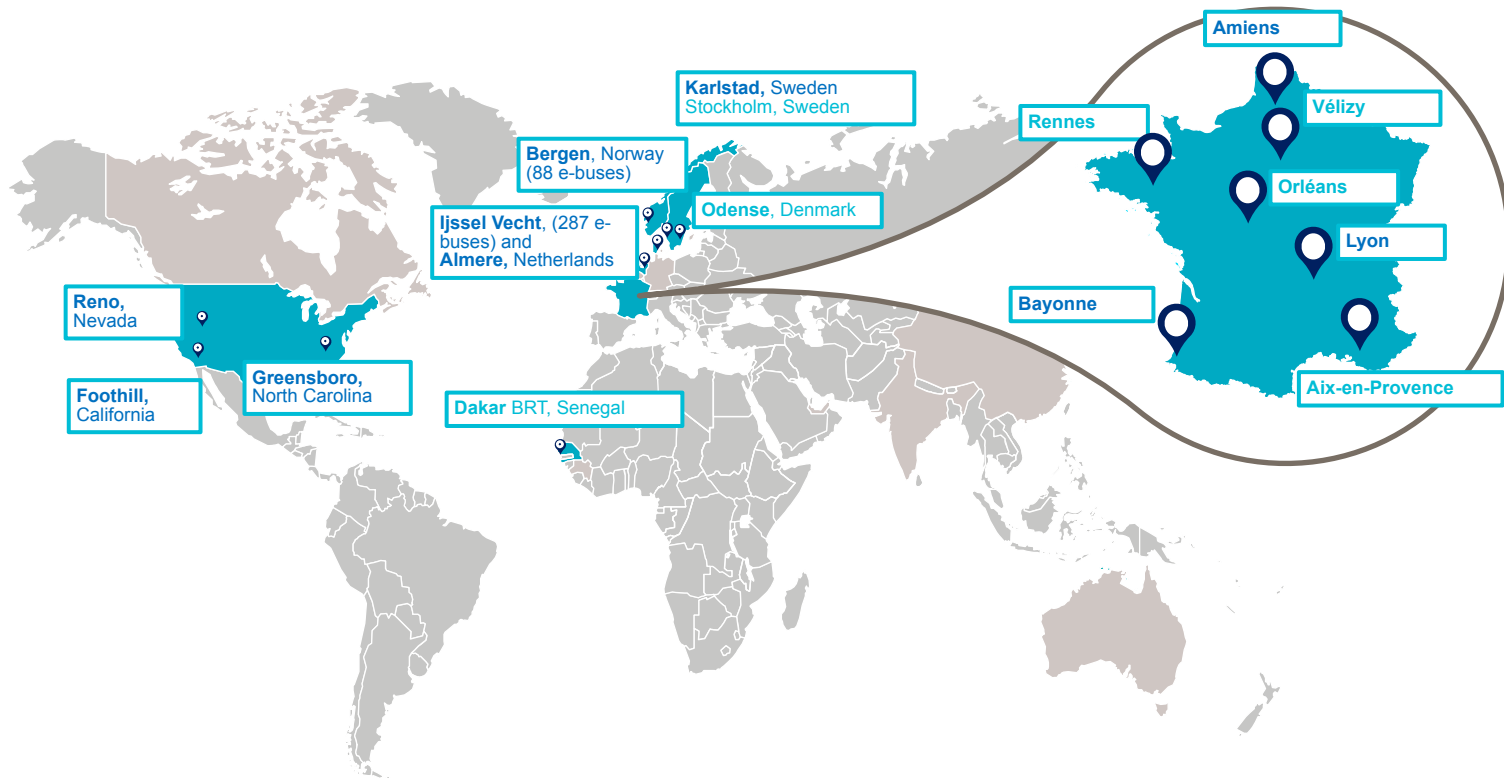
**KEOLIS**

# Who we are in figures



# We count more 23,000 buses and coaches

including 4,000 alternative energy vehicles, 860 of which are electric



# In Bergen, Norway, deployment of 102 electric buses

## Main figures

PTA



Skyss

### CONTRACT DURATION



10 + 1 + 1 years  
from December 2020

### FLEET



102 electric buses (Yutong)  
+ 10 trolleys (Solaris)  
+ 26 Biodiesel buses (Volvo)

### MILEAGE



5.7 million kilometres a year

### Employees



7 dispatchers  
+ 6 administrative staff



285 bus drivers



4 maintenance agents  
+ 11 cleaning agents  
+ OEMs subcontracted personnel

### PASSENGERS



17 million passengers per year



CO<sub>2</sub> emissions will be reduced by  
85% over the life of the contract

## Network map - Bergen



Head office



Operational Control Center



2 Depots

Åsane

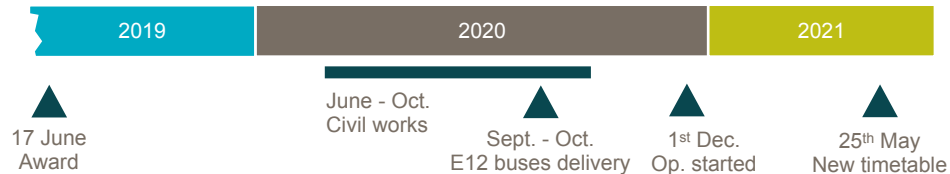


Straume



Mannsverk

## Project timeline



# In the Netherlands, deployment of the largest e-bus fleet in Europe

## Main figures for Bus activity

### PTA



Provinces of Gelderland and Overijssel

### CONTRACT



Started in December 2020

### FLEET



246 E-buses (BYD)

### MILEAGE



25 million km per year

### Employees



Over 800 employees



750 drivers



15,755 tons of CO<sub>2</sub> avoided  
5.31 tons of nitrogen and  
133 kilos of fine particulates

## Network map – IJssel-Vecht



7 depots

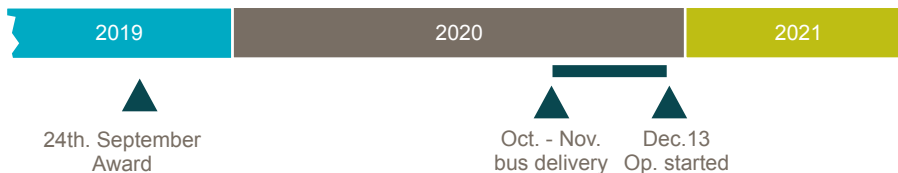
120 lines, 50 stations

177 charging stations

180 villages and 4 medium-sized cities



## Project timeline



# Ijssel-Vecht – Lessons Learned



- + On-time delivery
- + Adapted financial schemes
- + System integration (vehicles+chargers+IT)
- + IT is as strategic as the infrastructure
- + Reduced flexibility system → more flexibility in operation



more ways —————  
————— more life

keolis